

QJAR

QJR260-3100M

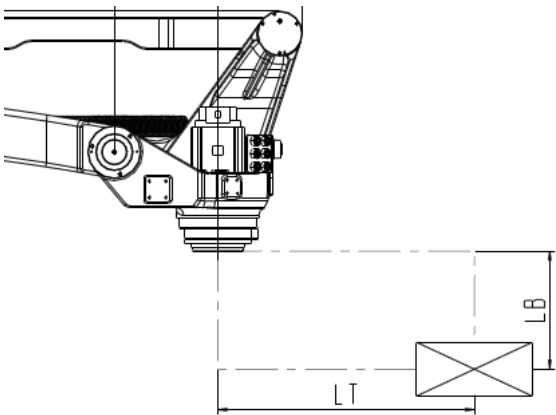
CE



1, Basic specifications of QJR260-3100M robot

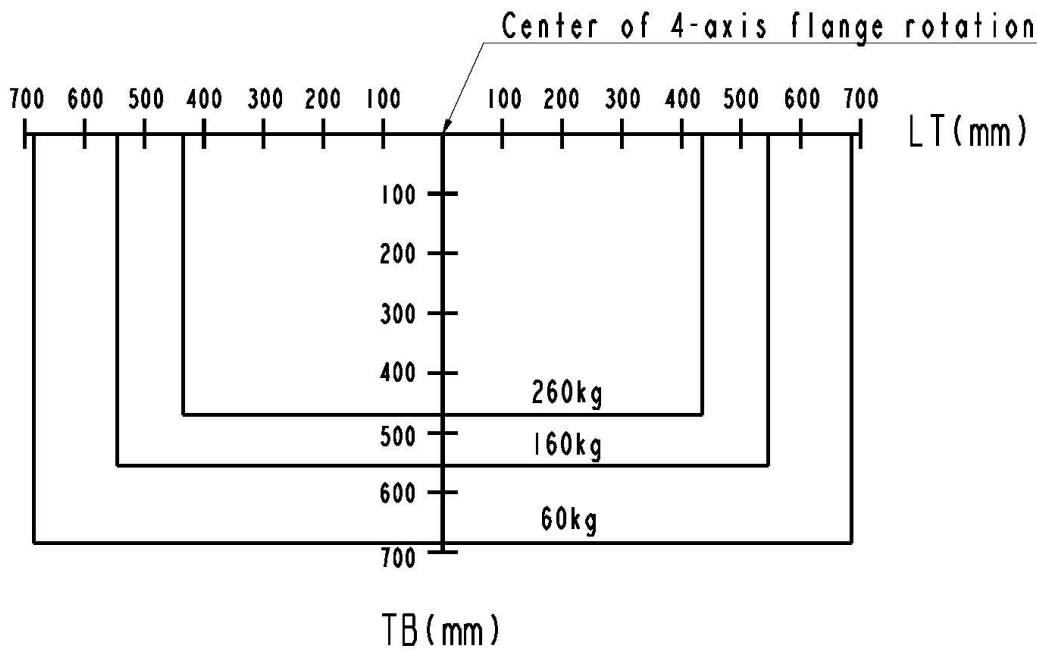
Basic specifications of QJR260-3100M robot			
Organization form		4-axis palletizing	
Freedom		4	
Payload		260kg	
Abduction of arms		3157mm	
Repeat positioning accuracy Δ^2		$\pm 0.5\text{mm}$	
Mechanical limit range	1 axis	$\pm 182^\circ$	
	2 axis	$+97^\circ, -50^\circ$	
	3 axis	$+112^\circ, -22^\circ$	
	4 axis	$\pm 360^\circ$	
Maximum speed	1 axis	1.7rad/s	$97^\circ/\text{s}$
	2 axis	1.7rad/s	$97^\circ/\text{s}$
	3 axis	1.7rad/s	$97^\circ/\text{s}$
	4 axis	5.2rad/s	$297^\circ/\text{s}$
Maximum acceleration	1 axis	$1.3\text{rad}/\text{s}^2$	$74^\circ/\text{s}^2$
	2 axis	$3.5\text{rad}/\text{s}^2$	$200^\circ/\text{s}^2$
	3 axis	$3\text{rad}/\text{s}^2$	$171^\circ/\text{s}^2$
	4 axis	$20\text{rad}/\text{s}^2$	$1145^\circ/\text{s}^2$
Moment of inertia	4 axis	$41.6\text{kg}\cdot\text{m}^2$	
Robot weight		1400kg	
Installation environment	temperat ure	$0\sim 45^\circ\text{C}$	
	humidity	20%~80% RH(No dewing)	
	Vibration	$<4.9\text{m}/\text{s}^2$ (0.5G)	
	other	Avoid flammable and corrosive gases and liquids; Avoid contact with water, oil, dust, etc; Keep away from electrical noise sources.	
Power capacity		19.3kVA	

2, QJR260-3100M robot load diagram

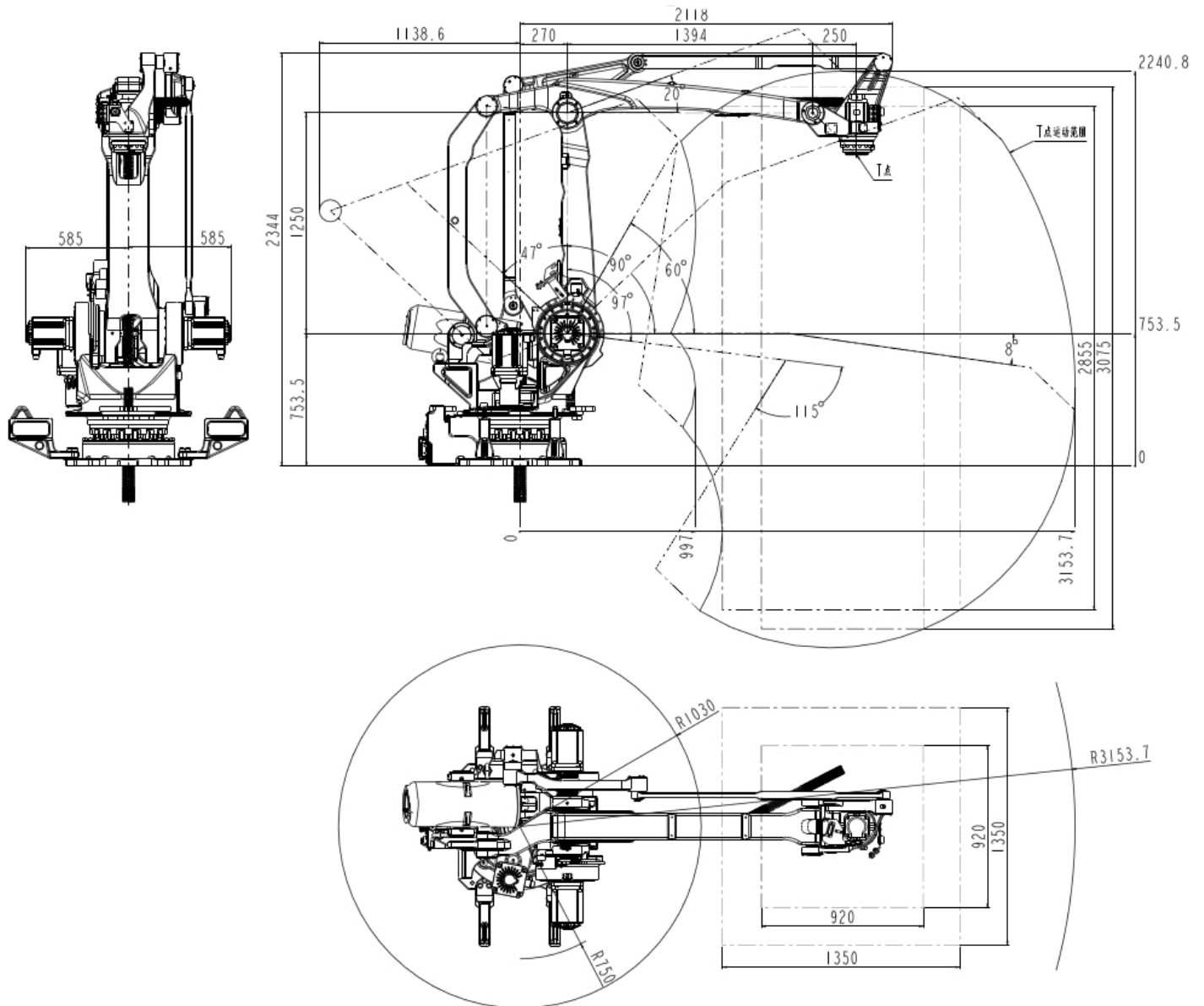


Load diagram (4 axis center is zero point)

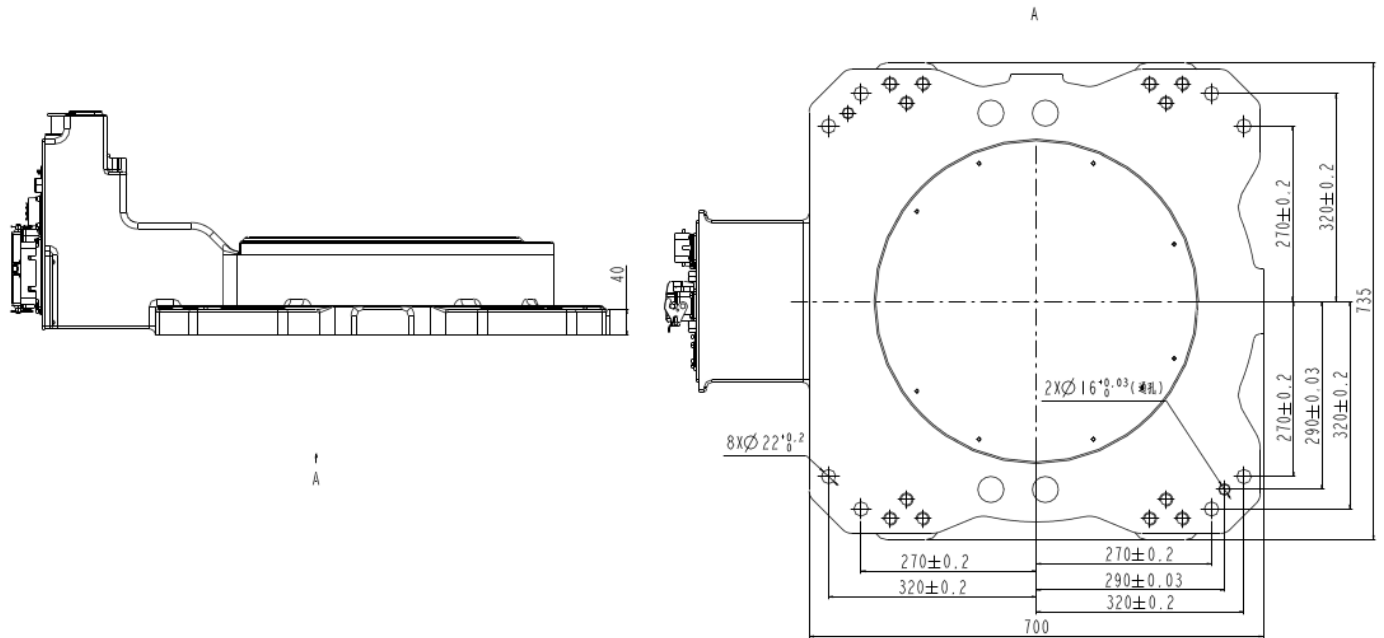
负载图 (4轴中心为零点)



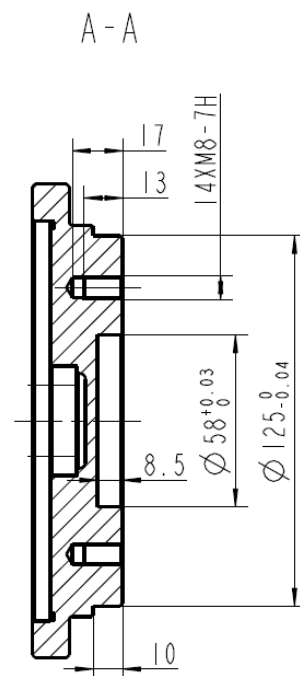
3, Outline dimension and maximum action range of QJR260-3100M robot



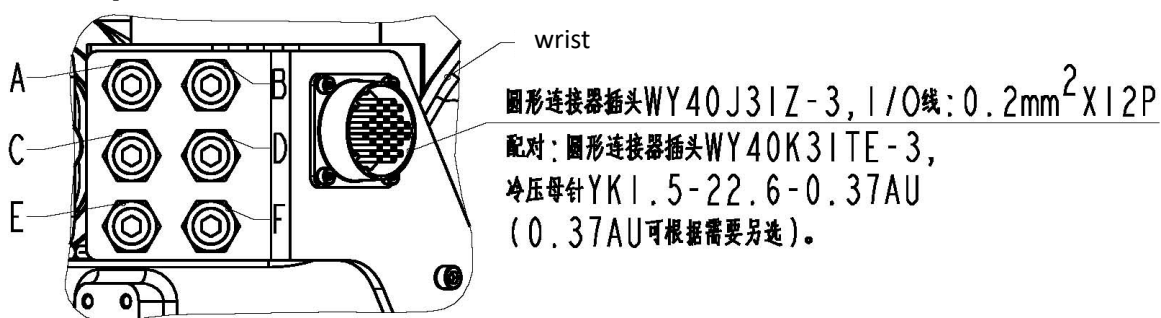
4, Installation dimension drawing of QJR260-3100M robot base



5, End installation dimension drawing of QJR260-3100M robot



6, Schematic diagram of the position of the reserved air path and I / O interface of the robot

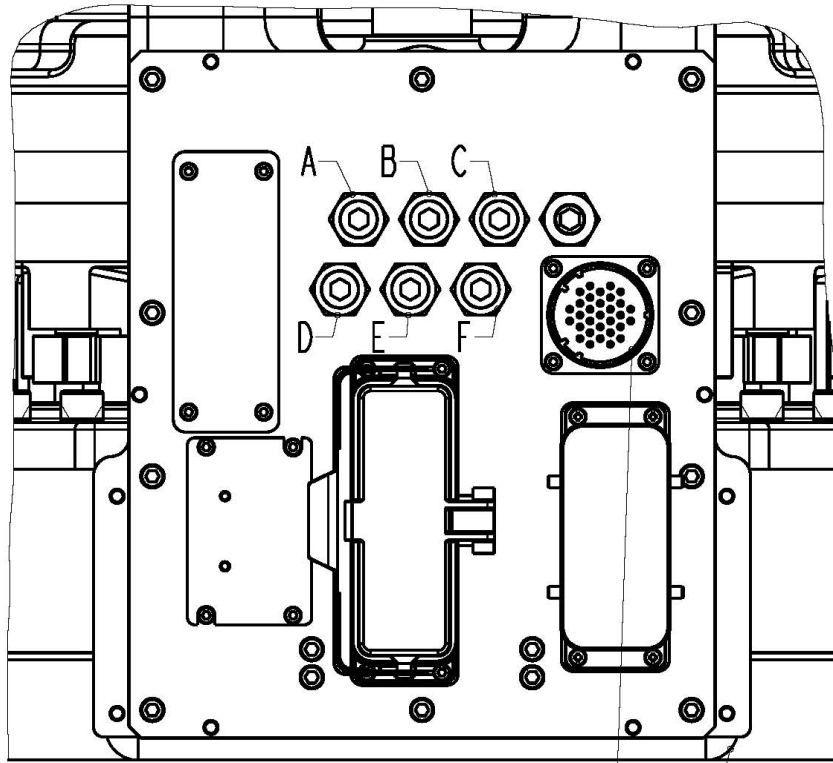


Circular connector plug WY40J3IZ-3, I/O wire : $0.2\text{mm}^2 \times 12\text{P}$

Pairing: round connector plug WY40K3ITE-3,

Cold pressing female pin YKI.5-22.6-0.37AU

(0.37AU can be selected separately as required).



圆形连接器插头WY40J3IZ-3, I/O线: $0.2\text{mm}^2 \times 12\text{P}$

Base

配对: 圆形连接器插头WY40K3ITE-3,
冷压母针YK1.5-22.6-0.37AU
(0.37AU可根据需要另选)。

说明:

- 1、底座A、B、C、D、E、F为预留气路进气口, R3/8螺纹, 带锥塞, 气管外径为 $\Phi 10\text{mm}$;
- 2、腕部A、B、C、D、E、F为预留气路出气口, R3/8螺纹, 带锥塞, 气管外径为 $\Phi 10\text{mm}$;
- 3、底座和腕部位置圆形连接器插头的同位置连通。

Circular connector plug WY40J3IZ-3, I/O wire : $0.2\text{mm}^2 \times 12\text{P}$

Pairing: round connector plug WY40K3ITE-3,

Cold pressing female pin YK1.5-22.6-0.37AU

(0.37AU can be selected separately as required).

Explain:

1. Base a, B, C, D E, f is the reserved air inlet, R3 / 8 thread, with taper plug, and the outer diameter of air pipe is $\Phi 10\text{ mm}$
2. Wrist a, B, C, D E, f are reserved air outlet, R3 / 8 thread, with taper plug, and the outer diameter of air pipe is $\Phi 10\text{ mm}$
3. The bottom is connected with the same position of the circular connector plug at the wrist position.

7, QJR260-3100M Robot finished product configuration table

QJR260-3100M Robot finished product configuration table	
Motor	Gao hua chuang ke motor
RV Reducer	Domestic RV Reducer
controller	KEBA
Drive	Tsino Dynatron

8, QJR260-3100M Configuration information of control cabinet

QJR260-3100M Control cabinet	
Control hardware	KEBA
Control cabinet software	KEBA
Power Supply	Three phase five wire AC380V(+10%,-10%)
Rated power	22.6KW
Power capacity	19.3KVA
Control cabinet size	650x750x1150mm
Weight of control cabinet	140kg
ambient temperature	0-45°C
Maximum humidity	20%~80% RH (No dewing)
Degree of protection	IP54
operation panel	On the control cabinet
Programming unit	Color touch screen teaching box
Security	Emergency stop, automatic mode stop, remote mode stop
I / O	Digital IO 22 input 24 output